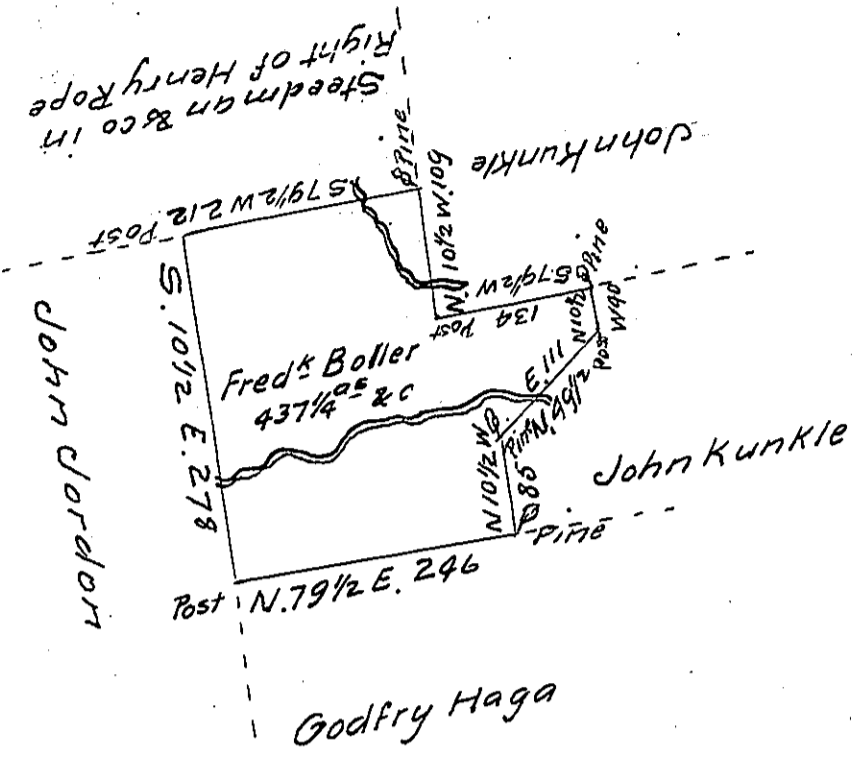


Hazel  
Luzerne



A Draft of a tract of Land called \_\_\_\_\_ situate on the waters  
of Black Creek in the County of Northum<sup>d</sup> or Northamp<sup>n</sup> con-  
taining Four hundred thirty seven acres <sup>1</sup>/<sub>4</sub> and allowance of  
six p. cent & c. Surveyed the 10<sup>th</sup> day of October 1793 by virtue of  
a warrant dated the 10<sup>th</sup> day of July 1793.

by W<sup>m</sup> Gray D.S.

To Daniel Brodhead Esq<sup>r</sup> }  
 Surv<sup>t</sup> Gen<sup>l</sup> }

IN TESTIMONY that the above is a copy of the original remaining on file in  
the Department of Internal Affairs of Pennsylvania, made  
conformably to an Act of Assembly approved the 16th day of  
February, 1833, I have hereunto set my Hand and caused  
the Seal of said Department to be affixed at Harrisburg,  
this eleventh day of July 1911

*Henry Honck*  
 Secretary of Internal Affairs.